



# LEXUS LBX HYBRID INSURANCE TERMS AND CONDITIONS

 **LEXUS** | INSURANCE  
SERVICES



# INTRODUCTION TO LEXUS LBX HYBRID INSURANCE

In addition to the excellent benefits of our Lexus Motor Insurance Policy, Lexus Hybrid Insurance provides an opportunity to receive a discount on your premium at renewal. The discount will be based on your EV (Electric Vehicle) mode usage over the course of your annual policy and will be applied to your renewal premium. You can see how the discount is calculated on page 6.

You will be able to monitor your EV usage in your Lexus Link + App which will update automatically after every journey you make, so you can stay on top of your potential discount. Please refer to page 7 on how you can access this information.

## HOW WILL WE MONITOR YOUR EV MILEAGE

By accepting the terms and conditions of this policy, you consent to us monitoring your mileage through your vehicle's Data Communication Module (DCM). We will not monitor how, when or where you drive.

## WHAT IF YOU CHANGE YOUR MIND?

If you no longer want us to monitor your EV mileage, you can withdraw your consent at any time. Although you will still be insured, you will no longer be eligible for a potential discount at renewal.

If you would like to withdraw your consent, please contact our team on 0330 022 6358 or via Live Chat. Alternatively, you can email us at: [service@lexusmotorinsurance.co.uk](mailto:service@lexusmotorinsurance.co.uk).

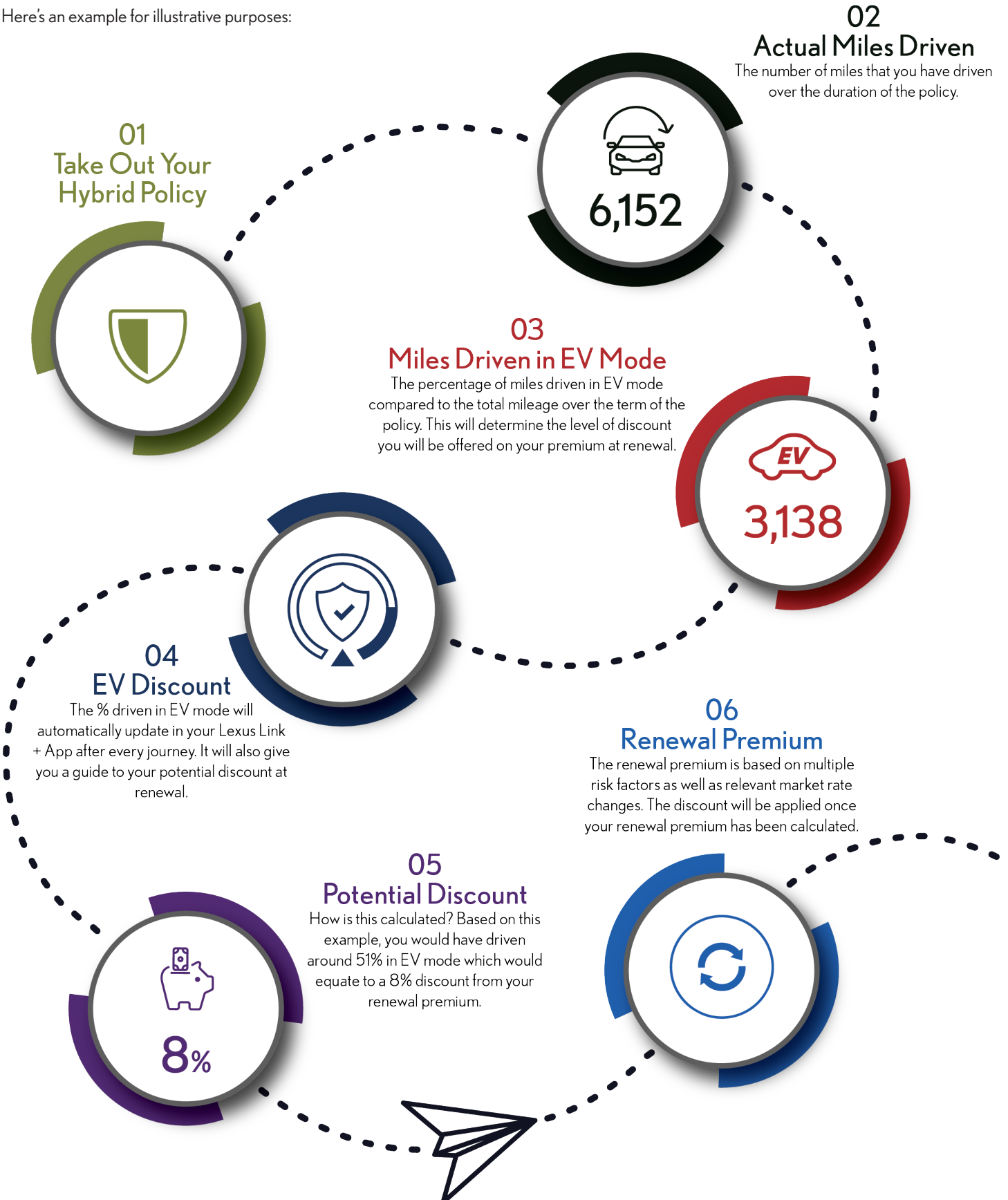
## IMPORTANT INFORMATION

This document forms part of your policy along with the Private Car Policy Document, your Statement of Fact, your Schedule (including any endorsements on it), your Certificate of Motor Insurance and our Important Information document. These must be read together as they form part of your contract.

We reserve the right to withdraw this product from sale at any time.

# HOW DOES IT WORK?

Here's an example for illustrative purposes:





## ELIGIBILITY

To be eligible for the discount, the following criteria must be met;

1. If you change your vehicle mid-way through your policy to a vehicle that is not a Lexus LBX, then you will not be eligible for a discount
2. The insured vehicle must be registered in UK (including Northern Ireland) for the first time during the product period.

# TO QUALIFY FOR THE RENEWAL DISCOUNT

You must adhere to the following terms to qualify for the renewal discount:

1. By accepting the conditions of this policy, you provide your consent for us to collect and record the mileage driven by your insured vehicle for the purpose of calculating the renewal discount, during the entire Period of Policy Cover and any subsequent Period of Policy Cover under this product.
2. The Policy must not have been cancelled, or be due to cancel (for any reason). No partial renewal discounts can be applied for partial Periods of Policy Cover.
3. If during the Period of Policy Cover your policy becomes unacceptable to us, for example due to the addition of an unacceptable driver, no partial renewal discounts are due for partial Periods of Policy Cover.

The discount calculation will be taken at the end of month 10, based on the actual miles driven in EV mode. This will be applied automatically to your renewal premium.

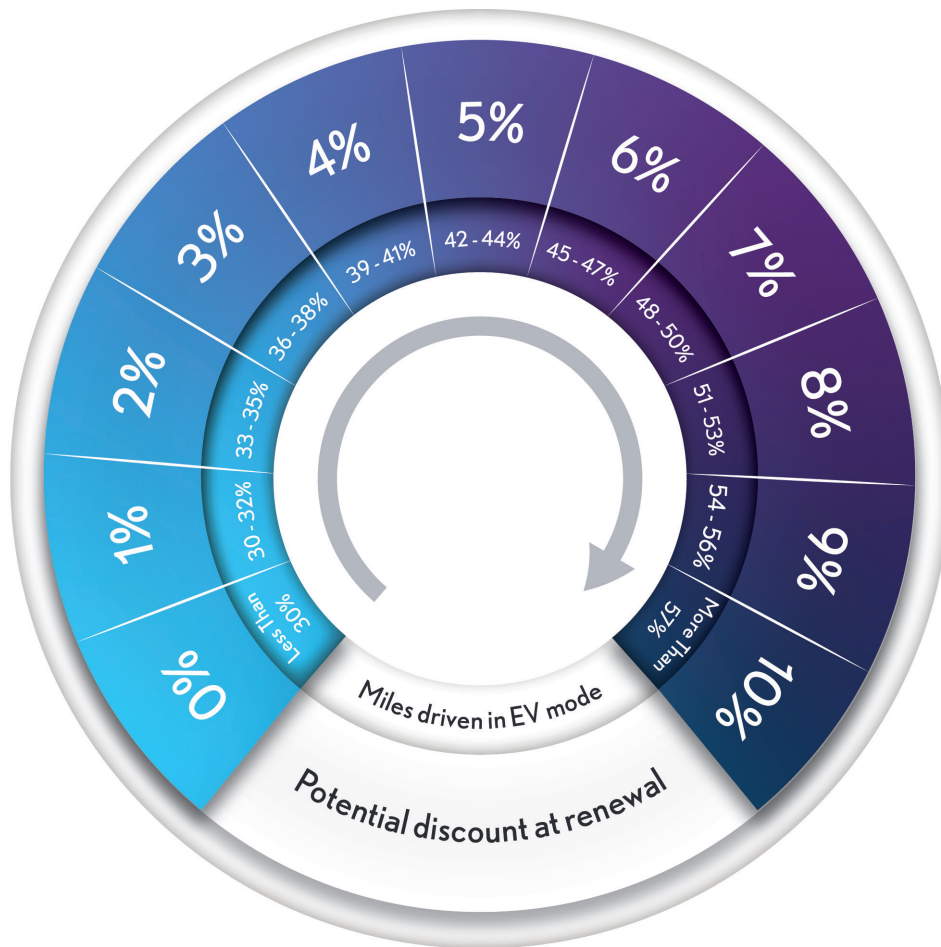
There will be no cash alternative available.



# HOW WE CALCULATE THE DISCOUNT

The image below shows the potential discount that can be offered on your renewal premium. To be eligible, you need to drive in EV mode for 30% or more of your total mileage over the duration of the policy. For the maximum discount of 10%, you will need to drive 57% or more in EV mode.

Embrace the potential of hybrid insurance and enjoy the rewards that it can bring.

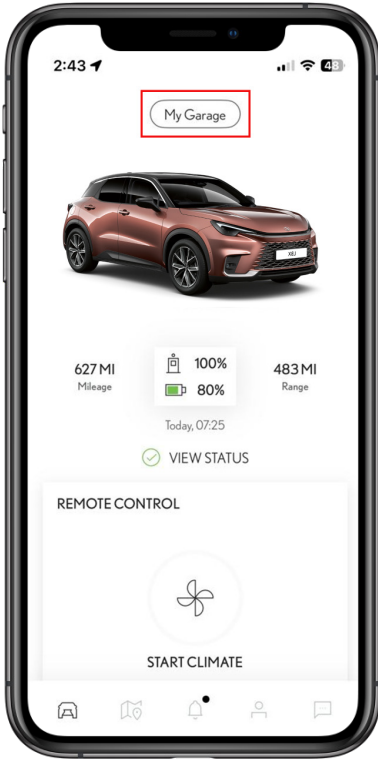


^All discounts are applied to your renewal premium. Even with the discount applied, your premium may still increase based on various factors, including changes in risk profile, market conditions, and other relevant considerations.

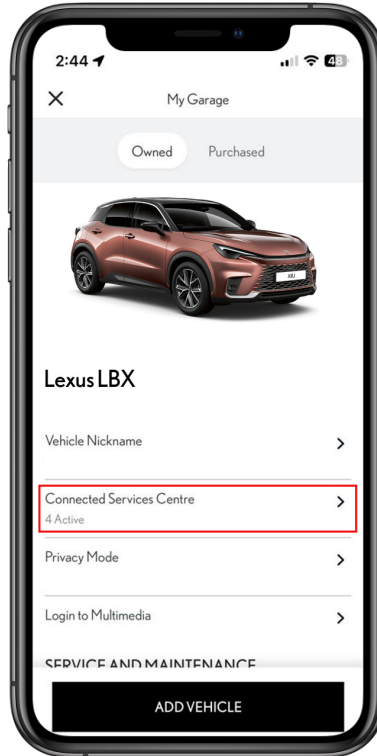
# HOW TO ACCESS YOUR DISCOUNT INFORMATION

Open up your Lexus Link + App and follow the below steps:

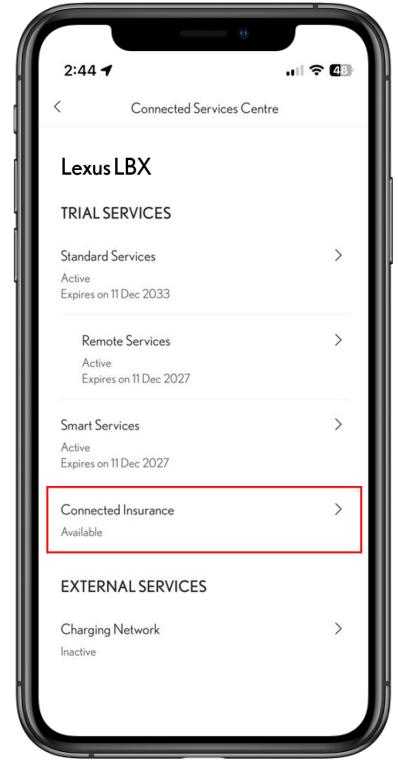
Click 'My Garage'



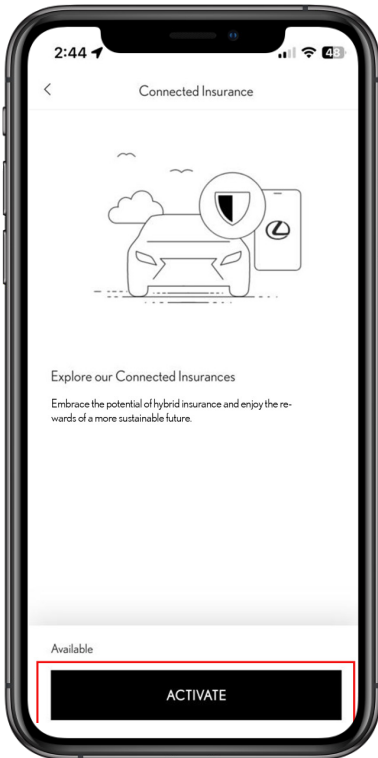
Click 'Connected Services Centre'



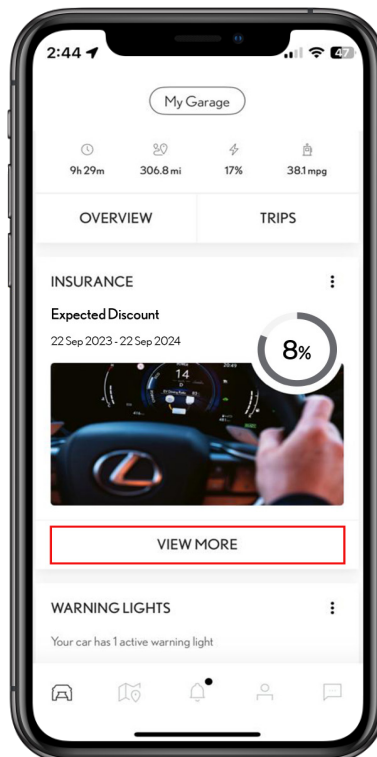
Click 'Connected Insurance'



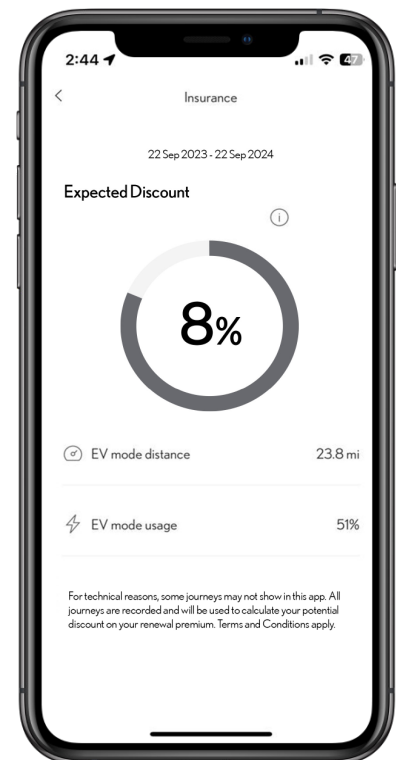
Click 'Activate'



Click 'View More'



Track your 'Expected Discount'



To find out more about your Lexus Link + App, please [click here](#).

For technical reasons, some journeys may not show in your Lexus Link + App. All journeys are recorded and will be used to calculate your potential discount on your renewal premium.



INSURANCE  
SERVICES

Insurance is arranged by Toyota Insurance Management UK Limited, trading as Lexus Insurance Services, registered in England, Company No. 14297877. Registered Office: 7th Floor, 52-56 Leadenhall Street, London, EC3A 2BJ. Authorised and regulated by the Financial Conduct Authority. Firm Reference Number: 983839.

Policies are underwritten and administered by Aioi Nissay Dowa Insurance UK Limited. Registered in England, No. 11105895. Registered Office: 7th Floor, 52-56 Leadenhall Street, London, EC3A 2BJ. Authorised by the Prudential Regulation Authority and regulated by the Financial Conduct Authority and Prudential Regulation Authority. Firm Reference Number: 816870.

**(FEB 2024)**